

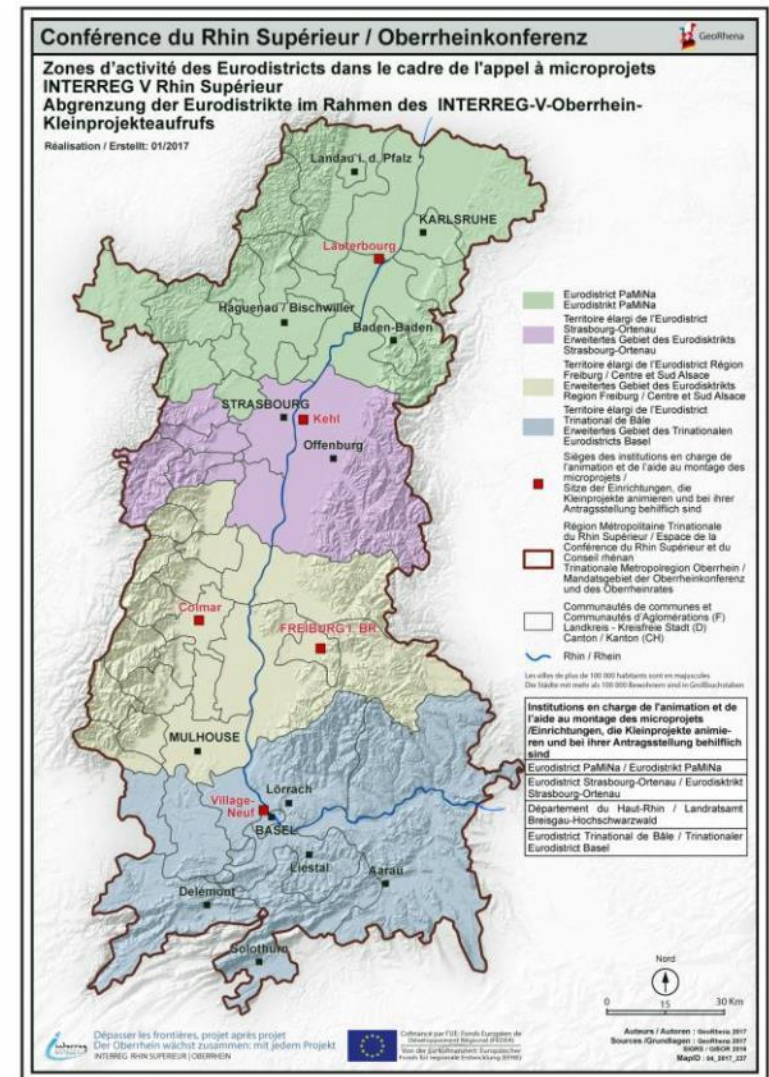
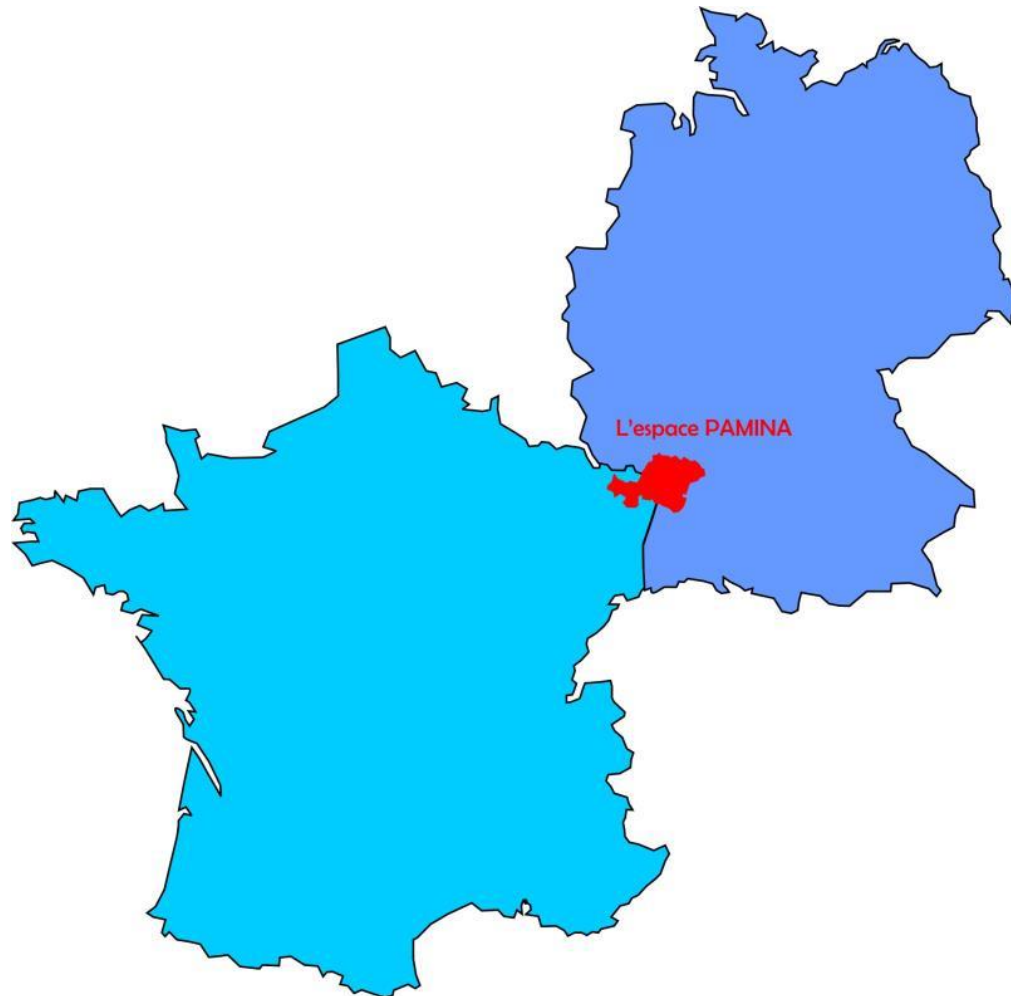
# Overview of the challenges and effects of cross-border mobility in the EU

**Annabell SCHLÖSSER**

Mobility, Sustainable Development and Public Relations

# Geographical situation

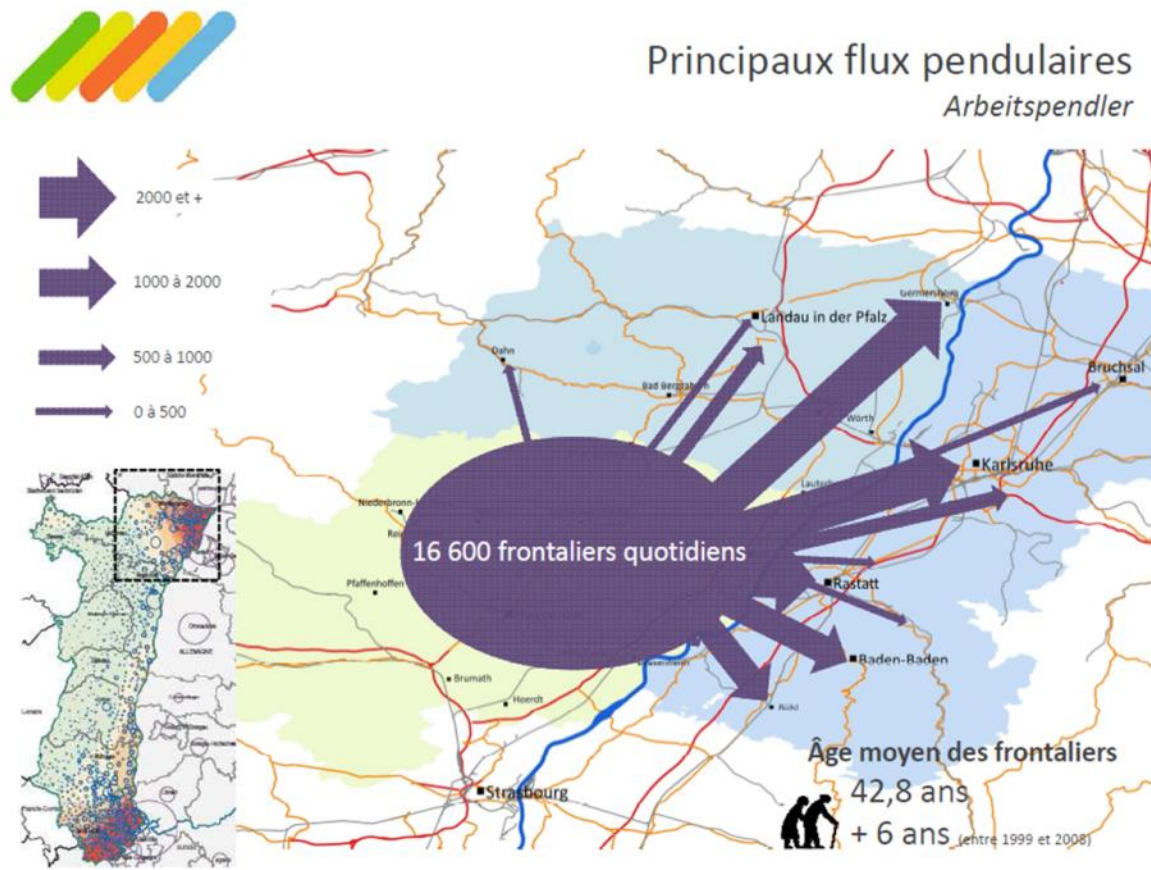
## The Upper Rhine



# Eurodistrict PAMINA

## Territory

- ~ 6500 km<sup>2</sup>
- ~ 1.700.000 inhabitants
- ~ 16.000 commuters



# Factors of cross-border mobility

1. Historical factors
2. Political factors
3. Economic factors
4. Socio-cultural factors
5. Geographical factors
6. Legal and administrative factors

# Challenges of cross-border mobility

1. Language Barriers
2. Identify the competent/responsible structure on the other side of the border
3. Identifying the missing cross-border links
4. Adapting existing (cross-border) mobility
5. A high number of stakeholders involved
6. Finding a cross-border solution

# Effects of cross-border mobility

- **MOBILITY FOR ALL**
  - Mobility should be improved for all groups of people
- **STRENGTHENING FUNCTIONAL INTERDEPENDENCIES**
  - The existing cross-border functional interdependencies at an economic and social level are to be strengthened and promoted
  - The aim is to achieve the greatest possible coherence between the main cross-border transport axes (commuter traffic, supply traffic, leisure traffic) and the public transport network

# Effects of cross-border mobility

- **STRENGTHENING SUSTAINABLE FORMS OF MOBILITY**
  - Increasing the share of environmentally friendly modes of transport
- **INTEGRATION OF THE ENTIRE REGION THROUGH CUSTOMISED AND TRANSPARENT MOBILITY SERVICES**
  - The different spatial and settlement structures in the sub-regions require and enable different, innovative solutions to improve mobility conditions.

# Action plan “Mobility”

## Focus

- Action plan to improve cross-border mobility
- Projects that can be realised in the short, mid and long term
- Cooperation with Civil Society (TransPAMINA)
- Integration into an overall concept for cross-border, territorial development



# Action plan “Mobility”

## Focus

Cross border mobility portal

Optimise transfer connections

Cross-border coordinated fare offers

Improving cross-border customer information

Expansion of cross-border public transport

Combined development of bus and bicycle services

Closing gaps by bridges etc.

Intelligent traffic management by equipping the Rhine ferry sites with smart technology

# THANK YOU VERY MUCH

for your attention

---

## CONTACT

**Annabell SCHLÖSSER**

Mobility, Sustainable Development & Public Relations

+ 33 3 68 33 88 22 | + 49 7277 / 89 990 22

[annabell.schloesser@alsace.eu](mailto:annabell.schloesser@alsace.eu)